

## CHECKLIST

### **Install Link-it**

- Check that the computer meets the system requirements page 2
- Install Link-it (1-user) page 3
- Install Link-it (School license) page 4
- Update Link-it page 5
- Register Link-it page 7
- Find more information and get support page 8



## □ Check that the computer meets the system requirements

*Also see the back of the manual.*

Minimum system requirements (recommendations within brackets)

Windows 98SE/2000/NT/XP

Processor: Pentium II 300 MHz (450 MHz)

RAM Windows 98: 32 Mb (64 Mb)

RAM Windows 2000/NT/XP: 66 Mb (128 Mb)

Graphic card with 4 Mb graphical memory (8 Mb)

MS Internet Explorer 5.0 or later

MS Windows Media Player 6.4 or later

60 Mb available space on the hard disk

Note that Link-it does not work satisfactory with Windows Me.

**Check that the computer meets the minimum requirements for Link-it by doing this:**

**1. Check operating system and RAM:**

**Click with the right mouse button on the “This computer” icon and select “Properties” from the short-cut menu. Note which system it is and the amount of Mb RAM.**

It should be:

Win 98 with at least 32 Mb RAM

Win 2000/NT/XP with at least 64 Mb RAM

**2. Check the version number for Internet Explorer.**

**Double click the “Internet Explorer” icon to run the program.** *(If you are prompted to connect to Internet select “Work offline”.)*

**Select “About Internet Explorer” from the “Help” menu. Check that the version is at least 5.0.** *(You can find the Internet Explorer icon on the desktop and the menu at the top of Internet Explorer’s program window.)*

**3. Check available hard disk space:**

**Double click the “This computer” icon and then select the icon for hard disk.**

*(Your hard disk has usually got the letter “C:”.)*

Check the available space on the hard disk and make sure it is at least 60 Mb.

If the Internet Explorer version number is lower than 5.0 you can update Internet Explorer free over the Internet. Select “Windows Update” from the “Tools” menu in Internet Explorer. The program will help you to update.

You can also update from this page: <http://www.microsoft.com/windows/ie/worldwide>

You can use Link-it if your computer does not meet the minimum system requirements. However, it may result in disturbances, e.g. it may take longer to open Link lists and replay links. The version of Internet Explorer and the hard disk space must be at least the stated requirements in order for Link-it to work.



## □ **Install Link-it** (1-user)

*Also see the back of the manual.*

Link-it must be installed on every computer that shall have access to the program. When installing Link-it the school license versions can first be copied to a network disk and then run from there.

### **This is how you install Link-it Create, or Link-it Use:**

- 1. Close all programs that are running.** To make sure that the installation of Link-it goes smoothly without problems we recommend that you close all programs that are running. The programs currently running on the computer are displayed as buttons on the Taskbar.



Close these programs by right clicking them in the Taskbar and select "Close". *(You can also click the cross to the right at the top of the program lists.)*  
*(The Taskbar is the field at the bottom of the desktop that contains the "Start" button.)*

- 2. Place the program CD in the computer to start the installation program.** The installer starts automatically when you insert the CD. In case the installer does not start automatically: double click the "This computer" icon and then select the icon for your CD. Click the installation program for Link-it. *(The installation program can be called different things depending on what version of Link-it you have, e.g. "Link-itCreateP".)*
- 3. Specify name and license number in the registration dialog that appears. Click "OK" and confirm if the information is correct.** The name you type in here will be displayed in the information for all Link lists and Linked books that are created with the program. It is therefore important that you specify the correct name. *(The license number is available from the back of the CD sleeve.)*
- 4. Click "Next" in the installation dialogs that appear.** Recommended alternatives are already specified and you can click your way through the installation by clicking "Next" until Link-it is started.
- 5. When you get the message that the installation is completed, click "Finish" to finish the installation.** You may now, depending how old your computer is and how it is configured, get a message that you need to restart your computer.

On the desktop you will now find a program icon with which you can start Link-it. You can also start Link-it via Start > Program > Link-it.

\*\*\*\*\*



## **Install Link-it** (School license)

The installation for school license is the same as for 1-user up until step 3. In step 4 in the installation dialog for school license it is possible to specify that a steering file shall be created and placed on a selected place on the network.

This steering file, "LinkitNetwork.ini", specifies which folder shall be displayed first (be default folder) for:

- Open Link list
- New Link list
- Open book mark list
- New book mark list
- Open video
- Open text
- Open picture
- Create Link-it book

If you are a Network Administrator and want to be able to control where the users find and save their Link lists you should install LinkitNetwork.ini on the network. All users must have read access to the location where you place LinkitNetwork.ini. When installing Link-it on the following computers the file is selected and the procedure is the same.

### **This is how you install/select the steering file LinkitNetwork.ini:**

- 1. Select the checkbox "Install steering file "LinkitNetwork.ini". Click "Browse" and select the location on the network where you can find/want to place "LinkitNetwork.ini".**
- 2. Click "Next".**

In the document "Work with Link-it in a network" you can read about how you edit the steering file LinkitNetwork.ini. In the document you will also get suggestions on how to structure folders for placing Link lists and video on a network.

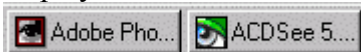
\*\*\*\*\*

## □ Update Link-it

Link-it is updated continuously to solve problems that may occur in the program or to implement new improved functions. The programs Link-it Create, and Link-it Use, you have just installed can be updated while the computer is connected to the Internet. We recommend that you perform these updates regularly in order to have access to the best functionality.

**This is how you update the programs Link-it Use, and Link-it Create to the latest version:**

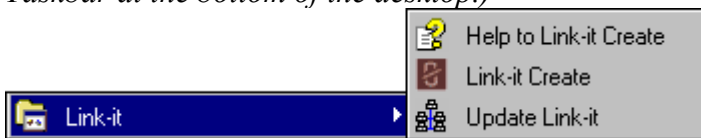
1. **Connect to the Internet.**
2. **Close Link-it and all other programs that are running.** To make sure that the update of Link-it goes smoothly without problems we recommend that you close all programs that are running. The programs currently running on the computer are displayed as buttons on the Activity field.



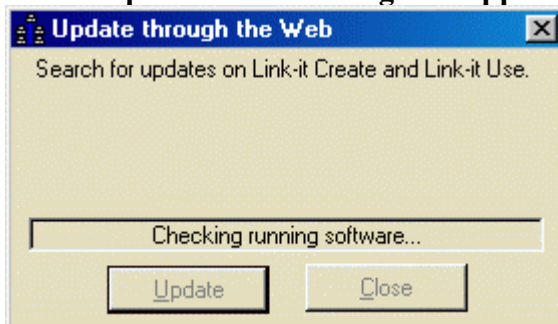
Close these programs by right clicking them in the Taskbar and select "Close" or click the cross to the right at the top of the program lists.

*(The Taskbar is the field at the bottom of the desktop that contains the "Start" button.)*

3. **Select "Update Link-it" under "Link-it" from "Program" in the start menu.**  
*(The start menu is the menu displayed when you click the "Start" button on the Taskbar at the bottom of the desktop.)*

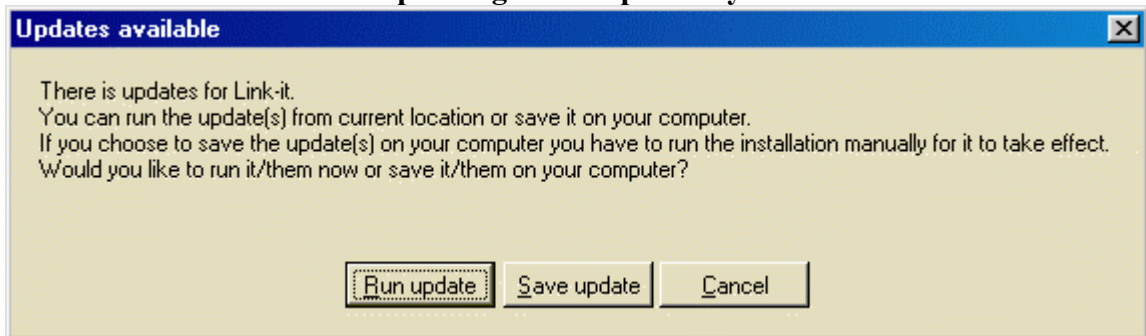


4. **Click "Update" in the dialog that appears on the screen.**



The program will now search to see if there are any updates for the program version installed on your computer. If you already have the latest version you will receive a message about this and the update is cancelled.

5. **If there is an update, click “Run the update” to start the installation. It can take between 5 and 40 minutes depending on the speed of your connection.**



”Run the update” means that the installation is performed over the Internet. You can also select ”Save update”. The update is then saved as an installation file on your computer from a location selected by you. The installation is started manually when download is complete. **Note:** The downloaded installation file can be copied to a CD and used on computers that need updates but don’t have Internet connections.

From version 1.2.0 the bookmark lists are mapped when they are created. This simplifies the handling of bookmark lists and prevents that the bookmarks are mixed up.

The instructions in this document apply to version 1.4.4.

You can check the version of Link-it if you select ”About the product” from the “Info” menu in Link-it. *(The “Info” menu is placed to the right at the top of the screen in Link-it.)*

When you register you will receive messages when new updates are available.

\*\*\*\*\*



## □ Register Link-it

When you register as a user of Link-it you will get messages via e-mail when new updates are available. This also assures you of that important information about Link-it reaches you.

To register as a user is not mandatory.

**This is how you register:** (Link-it must be running!)

- 1. Connect to the Internet.**
- 2. Select "About the product" from the "Info".**  
*(The "Info" menu is placed to the right at the top of the screen in Link-it.)*
- 3. Click the "Register" button.**
- 4. Fill in the form that is displayed.** Specify if you have Link-it Create, or Link-it Use.  
All fields that are marked with (\*) are mandatory for registration to be performed successfully.
- 5. Click the button "Register" at the bottom of the form to send the registration.**

If the computer doesn't have a connection to the Internet, you can print the form and fax it to +46 515 808 47.

\*\*\*\*\*



## □ Find more information and get support

### Advanced information

On our web site you can find advanced information and hints about information and handling of Link lists and the Link-it programs:

[www.sit.se/direkt/link-it](http://www.sit.se/direkt/link-it)

### Technical support

If you run into technical problems you can contact the Swedish Institute for Special Needs Education Datapedagogen to get user support.

Opening hours for phone support:

Tuesdays and Thursdays 13.00–16.00

Tel. 020-75 00 85

Phone. +46 20 75 00 85

Text telephone: +46 19 10 61 44

You can also send e-mail to

[support.datapedagogen@sit.se](mailto:support.datapedagogen@sit.se)

